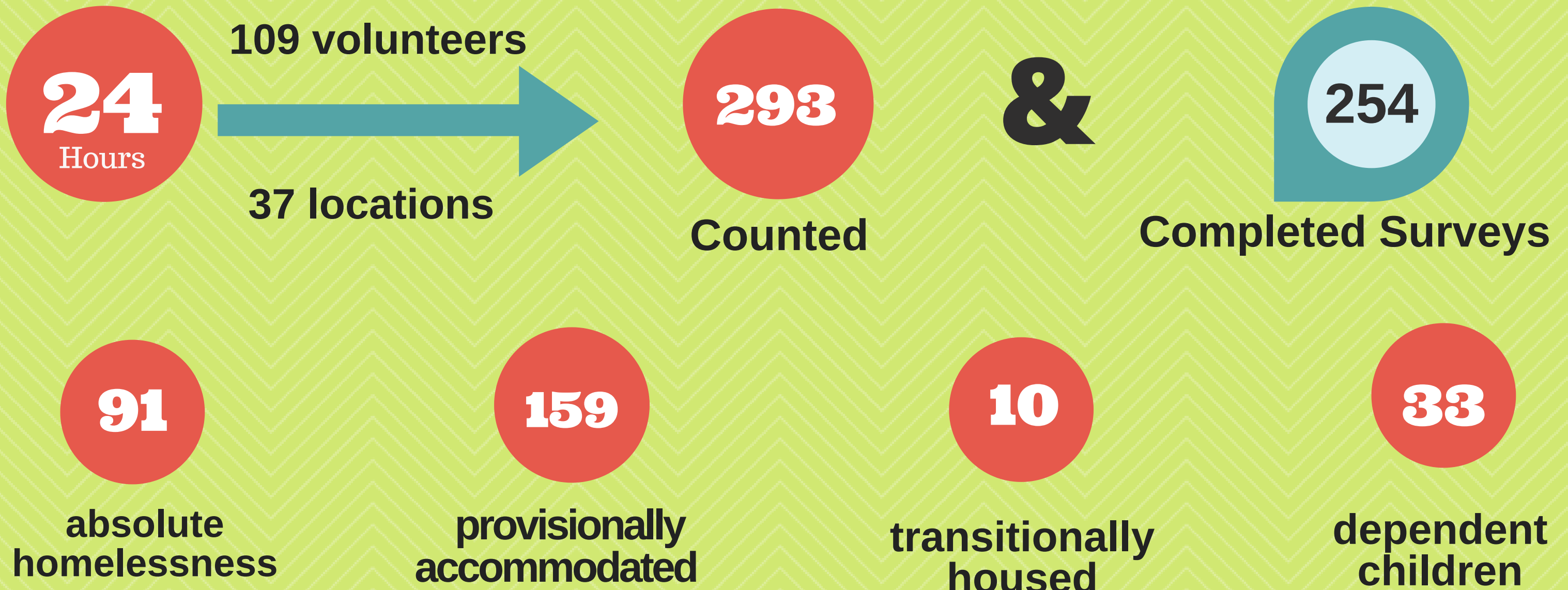


2020

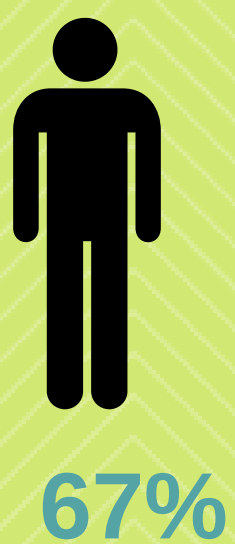
# Everyone Counts- Nipissing District



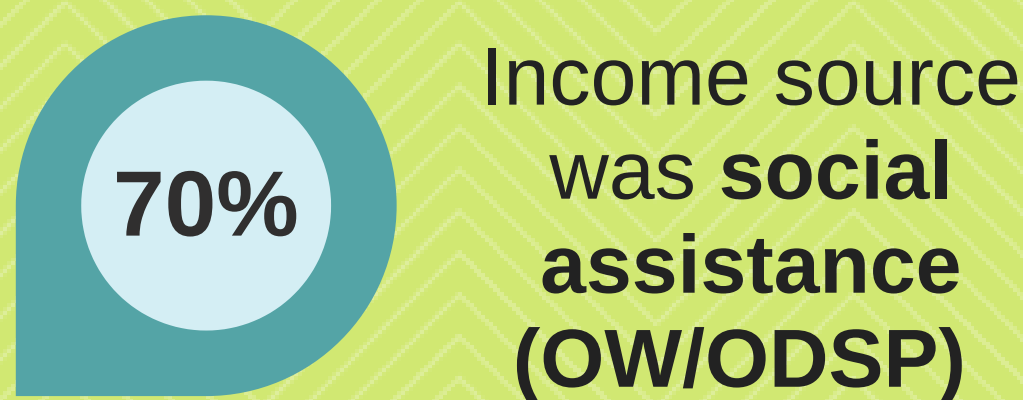
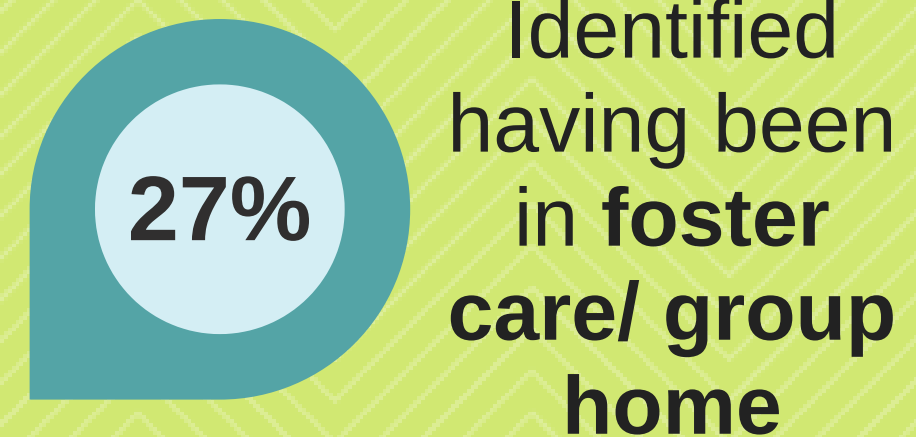
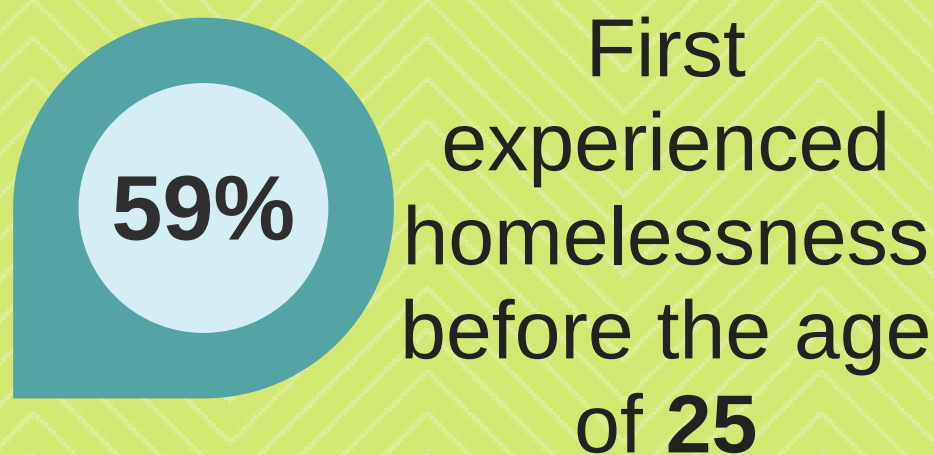
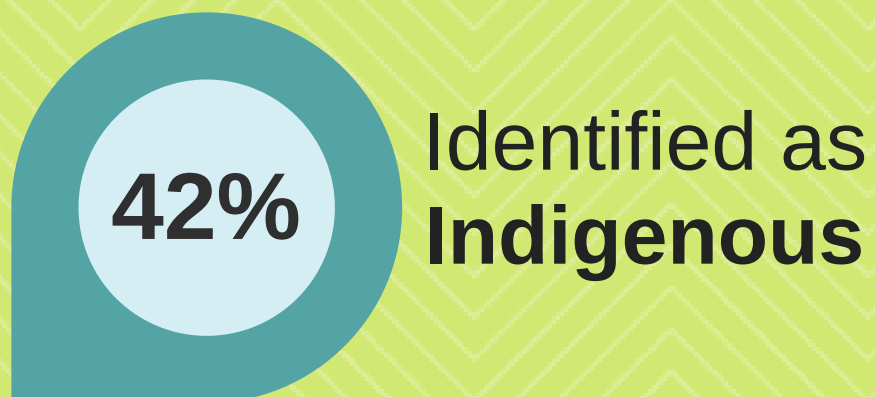
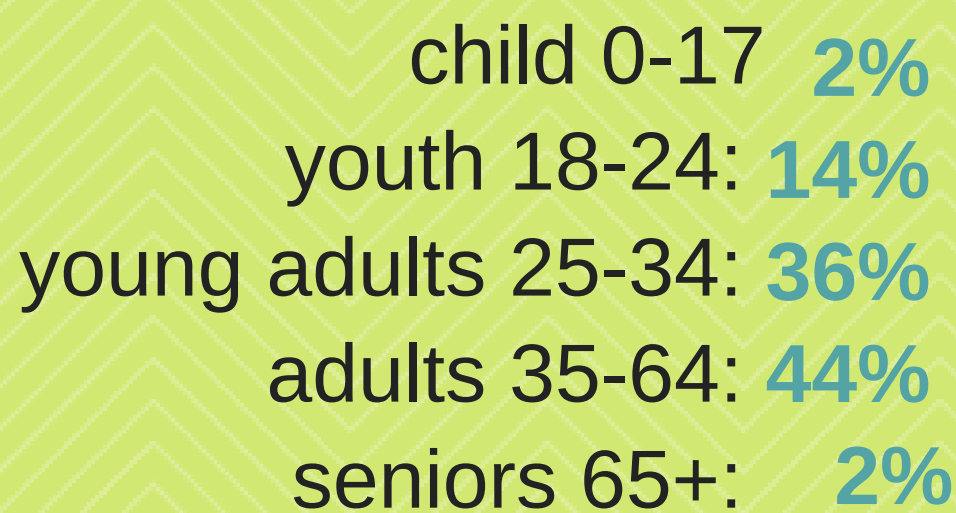
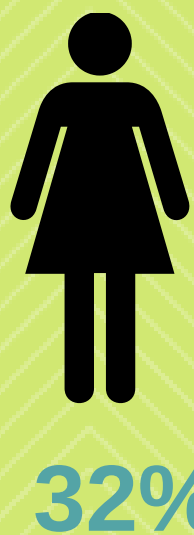
On Wednesday March 11th at 8:00 am to Thursday March 12th at 8:00 am, a Count and Survey of homelessness was conducted in: North Bay, Mattawa, and West Nipissing.



## Survey Demographics



gender



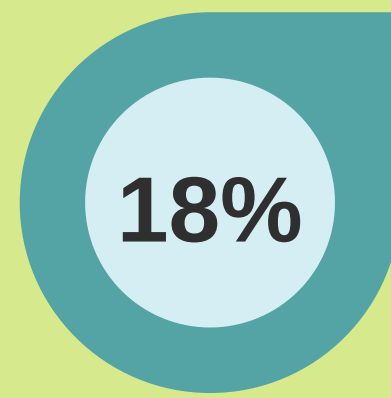
# community needs

## chronically homeless



for six months or more in the past year

## episodically homeless



for three or more times in the past year

## public system use In the past 12 months...



**117** visits to the E.R.

**= \$ 72,306**

Average cost based on: www.qch.on.ca  
Hospital Fees for Patients  
without Canadian Provincial or Federal Health  
Insurance



**22%** had been hospitalized

**37** times hospitalized

**= \$ 2,579,456**

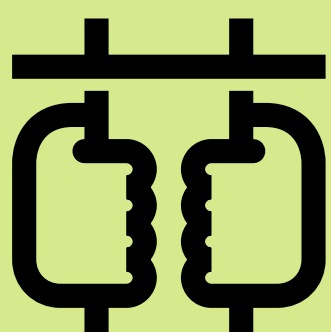
Average cost based on: www.qch.on.ca  
Hospital Fees for Patients  
without Canadian Provincial or Federal Health  
Insurance

**916** days hospitalized



**56%** had interactions with police

**1396** interactions



**39%** spent 1+ day in jail/prison

**11,305** days spent incarcerated

**= \$ 1,606,101**

Average cost based on: Gaetz, Stephen  
(2012),  
The Real Cost of Homelessness

**Total \$ 4,257,863**

## top 3 reasons for housing loss

- Addiction/ substance use\* - 21%
- Incarceration - 19%
- Conflict with Spouse/Partner- 16%

\* Based on single response

## top 3 barriers to finding housing\*\*

- Low income - 57%
- Discrimination & Stigma - 56%
- Addiction/Substance use - 52%

\*\* Based on multiple responses

